

# Penawaran Tower Clock Parts

Mesin Jam Menara untuk Media Luar Ruang

Kegunaan : UNTUK PEMBUATAN JAM MENARA – JAM TOWER  
Mesin Jam Tower Clock Outdoor – Kuat dan Tahan Air



---

Jakarta, February 2012

Kepada Pelanggan  
Di Tempat

**Dengan Hormat,**

Bersama ini kita sampaikan Penawaran harga terbaik untuk Spare Parts Mesin Jam Tower Clock.

Tower clock bisa dibuat Independent tanpa adanya Master Control ini lebih hemat, dimana pengontrolan Jam hanya dengan Dua Tombol.

Jika menghendaki Master Control perlu tambahan Biaya Hardware Master Control tersebut yang fungsinya untuk mengatur sinkronisasi beberapa Jam Tower dengan menggunakan hardware atau software di Komputer.

Hormat Kami,  
GFClock Yasa Persada

**ANGGONO BASUKI**  
Hp. 0818-802045  
Anggono[at]gfclock.com

## Contents

<b>PENAWARAN TOWER CLOCK PARTS .....</b>	<b>1</b>
<b>CONTENTS.....</b>	<b>2</b>
<b>HARGA MESIN JAM TOWER CLOCK – OUTDOOR CLOCK MOVEMENT .....</b>	<b>3</b>
GFA SERIES FOR 1 – 6 METER DIAMETER .....	3
GFC SERIES FOR 1 – 6 METER DIAMETER .....	5
<b>GFCLOCK YASA PERSADA.....</b>	<b>7</b>

## Harga Mesin Jam Tower Clock – Outdoor Clock Movement

### GFA Series for 1 – 6 Meter Diameter

Two hands: Hour and Minute



MODEL	Model / Descriptions	USD \$ / pcs
<b>Independent movement, time adjusted by pressing buttons on movement</b>		
GFA12SFP	For dial size up to 1.2m (ABS outer case)	
GFA12SHP	For dial size up to 1.2m, support LED illumination on hands (ABS outer case)	
GFA25NFP	For dial size from 1.3m to 2.5m	
GFA25NHP	For dial size from 1.3m to 2.5m, support LED illumination on hand	
GFA25LFP	For dial size from 1.3m to 2.5m, with extended long shafts	
GFA40NFP	For dial size from 2.6m to 4.0m	
GFA40NHP	For dial size from 2.6m to 4.0m, support LED illumination on hands	
GFA40LFP	For dial size from 2.6m to 4.0m, with extended long shafts	
GFA40LHP	For dial size from 2.6m to 4.0m, with extended long shafts, support LED illumination on hands	
GFA60NFP	For dial size from 4.0m to 6.0m 1	
GFA60NHP	For dial size from 4.0m to 6.0m, support LED illumination on hands	
GFA60LFP	For dial size from 4.0m to 6.0m, with extended long shafts	
GFA60LHP	For dial size from 4.0m to 6.0m, with extended long shafts, support LED illumination on hands	
<b>Secondary movement, time synchronized with master clock</b>		
GFA12SFS	For dial size up to 1.2m (ABS outer case)	

## Clock Solutions

GFA12SHS	For dial size up to 1.2m, support LED illumination on hands (ABS outer case)	
GFA25NFS	For dial size from 1.3m to 2.5m	
GFA25NHS	For dial size from 1.3m to 2.5m, support LED illumination on hands	
GFA25LFS	For dial size from 1.3m to 2.5m, with extended long shafts	
GFA40NFS	For dial size from 2.6m to 4.0m	
GFA40NHS	For dial size from 2.6m to 4.0m, support LED illumination on hands	
GFA40LFS	For dial size from 2.6m to 4.0m, with extended long shafts	
GFA40LHS	For dial size from 2.6m to 4.0m, with extended long shafts, support LED illumination on hands	
GFA60NFS	For dial size from 4.1m to 6.0m	
GFA60NHS	For dial size from 4.1m to 6.0m, support LED illumination on hands	
GFA60LFS	For dial size from 4.1m to 6.0m, with extended long shafts	
GFA60LHS	For dial size from 4.1m to 6.0m, with extended long shafts, support LED illumination on hands	

### Independent movement with adjusting buttons, and can also be synchronized with master clock

GFA12SFB	For dial size up to 1.2m (ABS outer case)	
GFA12SHB	For dial size up to 1.2m, support LED illumination on hands (ABS outer case)	
GFA25NFB	For dial size from 1.3m to 2.5m	
GFA25NHB	For dial size from 1.3m to 2.5m, support LED illumination on hands	
GFA25LFB	For dial size from 1.3m to 2.5m, with extended long shafts	
GFA40NFB	For dial size from 2.6m to 4.0m	
GFA40NHB	For dial size from 2.6m to 4.0m, support LED illumination on hands	
GFA40LFB	For dial size from 2.6m to 4.0m, with extended long shafts 1'480.-	
GFA40LHB	For dial size from 2.6m to 4.0m, with extended long shafts, support LED illumination on hands	
GFA60NFB	For dial size from 4.1m to 6.0m	
GFA60NHB	For dial size from 4.1m to 6.0m, support LED illumination on hands	
GFA60LFB	For dial size from 4.1m to 6.0m, with extended long shafts	
GFA60LHB	For dial size from 4.1m to 6.0m, with extended long shafts, support LED illumination on hands	

## Teknik Pemasangan dalam Dinding Tembok – GFA Series Dua Jarum

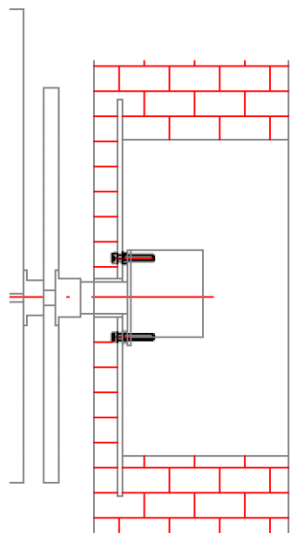


Fig. 1

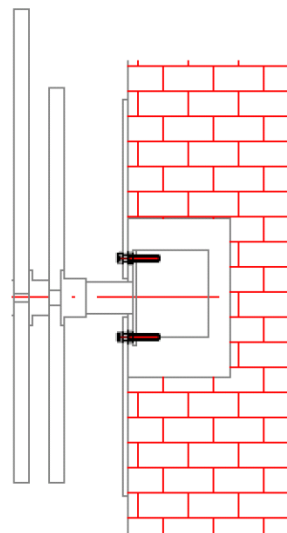


Fig. 2

GFC Series for 1 – 6 Meter Diameter

Three hands: Hour – Minute and Second



MODEL	Model / Descriptions	USD \$ / pcs
<b>Independent movement, time adjusted by pressing buttons on movement</b>		
GFC25NFP	For dial size from 1.3m to 2.5m	
GFC25NHP	For dial size from 1.3m to 2.5m, support LED illumination on hands	
GFC25LFP	For dial size from 1.3m to 2.5m, with extended long shafts	
GFC40NFP	For dial size from 2.6m to 4.0m	
GFC40NHP	For dial size from 2.6m to 4.0m, support LED illumination on hands	
GFC40LFP	For dial size from 2.6m to 4.0m, with extended long shafts	
GFC40LHP	For dial size from 2.6m to 4.0m, with extended long shafts, support LED illumination on hands	
GFC60NFP	For dial size from 4.0m to 6.0m	
GFC60NHP	For dial size from 4.0m to 6.0m, support LED illumination on hands	
GFC60LFP	For dial size from 4.0m to 6.0m, with extended long shafts	
GFC60LHP	For dial size from 4.0m to 6.0m, with extended long shafts, support LED illumination on hands	
<b>Secondary movement, time synchronized with master clock</b>		
GFC25NFS	For dial size from 1.3m to 2.5m 1'180.-	
GFC25NHS	For dial size from 1.3m to 2.5m, support LED illumination on hands	
GFC25LFS	For dial size from 1.3m to 2.5m, with extended long shafts	
GFC40NFS	For dial size from 2.6m to 4.0m	
GFC40NHS	For dial size from 2.6m to 4.0m, support LED illumination on hands	
GFC40LFS	For dial size from 2.6m to 4.0m, with extended long shafts	

## Clock Solutions

GFC40LHS	For dial size from 2.6m to 4.0m, with extended long shafts, support LED illumination on hands	
GFC60NFS	For dial size from 4.1m to 6.0m	
GFC60NHS	For dial size from 4.1m to 6.0m, support LED illumination on hands	
GFC60LFS	For dial size from 4.1m to 6.0m, with extended long shafts	
GFC60LHS	For dial size from 4.1m to 6.0m, with extended long shafts, support LED illumination on hands	
<hr/>		
GFC25NFB	For dial size from 1.3m to 2.5m 1'190.-	
GFC25NHB	For dial size from 1.3m to 2.5m, support LED illumination on hands	
GFC25LFB	For dial size from 1.3m to 2.5m, with extended long shafts	
GFC40NFB	For dial size from 2.6m to 4.0m	
GFC40NHB	For dial size from 2.6m to 4.0m, support LED illumination on hands	
GFC40LFB	For dial size from 2.6m to 4.0m, with extended long shafts	
GFC40LHB	For dial size from 2.6m to 4.0m, with extended long shafts, support LED illumination on hands	
GFC60NFB	For dial size from 4.1m to 6.0m	
GFC60NHB	For dial size from 4.1m to 6.0m, support LED illumination on hands	
GFC60LFB	For dial size from 4.1m to 6.0m, with extended long shafts	
GFC60LHB	For dial size from 4.1m to 6.0m, with extended long shafts, support LED illumination on hands	

### Teknik Pemasangan dalam Dinding Tembok – GFC Series Tiga Jarum

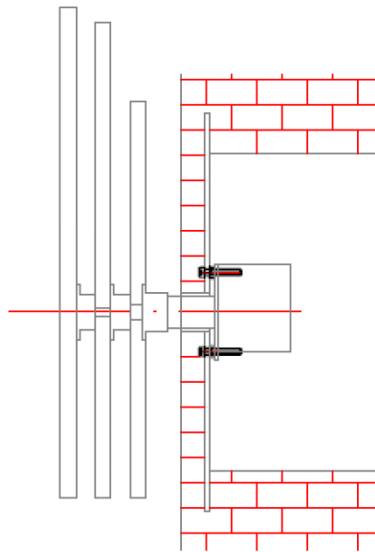


Fig. 1

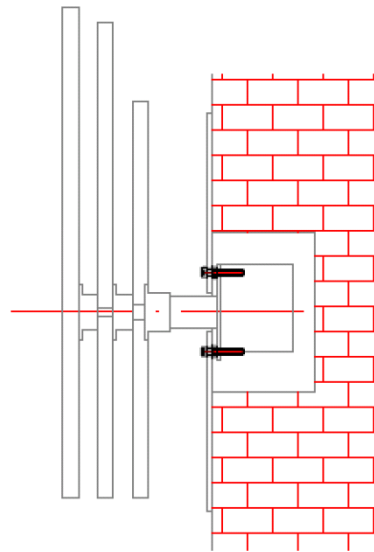


Fig. 2

## GFClock Yasa Persada

Showroom : Parkir Masjid Jami Al-Fajri  
Jl. Masjid Alfajri No.17 Pejaten Barat - Pasar Minggu - Jakarta Selatan  
12510

Telp. +62-21-41518840 ; 70978302

Office : Graha Mobisel 1<sup>st</sup> Floor  
Jl. Mampang Prapatan Raya No.139 - Jakarta Selatan 12740

Telp. +62-21-7975555 Ext.6049

Workshop : Jl. Masjid Alfajri No.11/44 Pejaten Barat – Pasar Minggu  
Jakarta Selatan 12510

Telp. +62-828-7790027

Phone : +62-21-79170265 E-mail : [anggono@gfclock.com](mailto:anggono@gfclock.com)  
+62-21-98529616 MSN : [baszukv@hotmail.com](mailto:baszukv@hotmail.com)

Fax : +62-21-79170265 YM : [baszukv@yahoo.com](mailto:baszukv@yahoo.com)

Website : Contact : MR.ANGGONO BASUKI  
HP. : 0818-802045

<http://www.gfclock.com> Blackberry: **2880ECDC**  
**29B48D7C**