

Penawaran Tower Clock Parts 2013

Mesin Jam Menara untuk Media Luar Ruang

Kegunaan : UNTUK PEMBUATAN JAM MENARA – JAM TOWER
Mesin Jam Tower Clock Outdoor – Kuat dan Tahan Air



Jakarta, December 2012

Kepada Pelanggan
Di Tempat

Dengan Hormat,

Bersama ini kita sampaikan **Perubahan Kenaikan Harga Spare Parts Mesin Jam Tower Clock effective per 1 January 2013**, dikarenakan penyesuaian bahan baku dan material dasar, serta harga produksi.

Tower clock bisa dibuat Independent tanpa adanya Master Control ini lebih hemat, dimana pengontrolan Jam hanya dengan Dua Tombol.

Jika menghendaki Master Control perlu tambahan Biaya Hardware Master Control tersebut yang fungsinya untuk mengatur sinkronisasi beberapa Jam Tower menjadi satu kesatuan tersinkronisasi.

Hormat Kami,
GFClock Yasa Persada

ANGGONO BASUKI
Hp. 0818-802045
Anggono[at]gfclock.com

Contents

PENAWARAN TOWER CLOCK PARTS 2013.....	1
CONTENTS.....	2
MESIN JAM TOWER CLOCK - OUTDOOR CLOCK MOVEMENT	3
GFA SERIES FOR 1 – 6 METER DIAMETER	3
GFC SERIES FOR 1 – 6 METER DIAMETER	6
MASTER CLOCK.....	9
GFLMC MASTER CLOCK FOR WALL MOUNTING	9
GFCMC MASTER CLOCK FOR DESKTOP USE	10
GFCLOCK YASA PERSADA.....	11

Mesin Jam Tower Clock - Outdoor Clock Movement

GFA Series for 1 – 6 Meter Diameter

Two hands: Hour and Minute – Japan Movement Technology



MODEL	Model / Descriptions	USD \$ / pcs
1). Independent movement, time adjusted by pressing buttons on movement		
GFA12SFP	For dial size up to 1.2m (ABS outer case)	Call
GFA12SHP	For dial size up to 1.2m, support LED illumination on hands (ABS outer case)	Call
GFA25NFP	For dial size from 1.3m to 2.5m	Call
GFA25NHP	For dial size from 1.3m to 2.5m, support LED illumination on hand	Call
GFA25LFP	For dial size from 1.3m to 2.5m, with extended long shafts	Call
GFA40NFP	For dial size from 2.6m to 4.0m	Call
GFA40NHP	For dial size from 2.6m to 4.0m, support LED illumination on hands	Call
GFA40LFP	For dial size from 2.6m to 4.0m, with extended long shafts	Call
GFA40LHP	For dial size from 2.6m to 4.0m, with extended long shafts, support LED illumination on hands	Call
GFA60NFP	For dial size from 4.0m to 6.0m 1	Call
GFA60NHP	For dial size from 4.0m to 6.0m, support LED illumination on hands	Call
GFA60LFP	For dial size from 4.0m to 6.0m, with extended long shafts	Call
GFA60LHP	For dial size from 4.0m to 6.0m, with extended long shafts, support LED illumination on hands	Call

2). Secondary movement, time synchronized with master clock

GFA12SFS	For dial size up to 1.2m (ABS outer case)	Call
GFA12SHS	For dial size up to 1.2m, support LED illumination on hands (ABS outer case)	Call
GFA25NFS	For dial size from 1.3m to 2.5m	Call
GFA25NHS	For dial size from 1.3m to 2.5m, support LED illumination on hands	Call
GFA25LFS	For dial size from 1.3m to 2.5m, with extended long shafts	Call
GFA40NFS	For dial size from 2.6m to 4.0m	Call
GFA40NHS	For dial size from 2.6m to 4.0m, support LED illumination on hands	Call
GFA40LFS	For dial size from 2.6m to 4.0m, with extended long shafts	Call
GFA40LHS	For dial size from 2.6m to 4.0m, with extended long shafts, support LED illumination on hands	Call
GFA60NFS	For dial size from 4.1m to 6.0m	Call
GFA60NHS	For dial size from 4.1m to 6.0m, support LED illumination on hands	Call
GFA60LFS	For dial size from 4.1m to 6.0m, with extended long shafts	Call
GFA60LHS	For dial size from 4.1m to 6.0m, with extended long shafts, support LED illumination on hands	Call

3). Independent movement with adjusting buttons, and can also be synchronized with master clock

GFA12SFB	For dial size up to 1.2m (ABS outer case)	Call
GFA12SHB	For dial size up to 1.2m, support LED illumination on hands (ABS outer case)	Call
GFA25NFB	For dial size from 1.3m to 2.5m	Call
GFA25NHB	For dial size from 1.3m to 2.5m, support LED illumination on hands	Call
GFA25LFB	For dial size from 1.3m to 2.5m, with extended long shafts	Call
GFA40NFB	For dial size from 2.6m to 4.0m	Call
GFA40NHB	For dial size from 2.6m to 4.0m, support LED illumination on hands	Call
GFA40LFB	For dial size from 2.6m to 4.0m, with extended long shafts 1'480.-	Call
GFA40LHB	For dial size from 2.6m to 4.0m, with extended long shafts, support LED illumination on hands	Call
GFA60NFB	For dial size from 4.1m to 6.0m	Call
GFA60NHB	For dial size from 4.1m to 6.0m, support LED illumination on hands	Call
GFA60LFB	For dial size from 4.1m to 6.0m, with extended long shafts	Call
GFA60LHB	For dial size from 4.1m to 6.0m, with extended long shafts, support LED illumination on hands	Call

Teknik Pemasangan dalam Dinding Tembok – GFA Series Dua Jarum

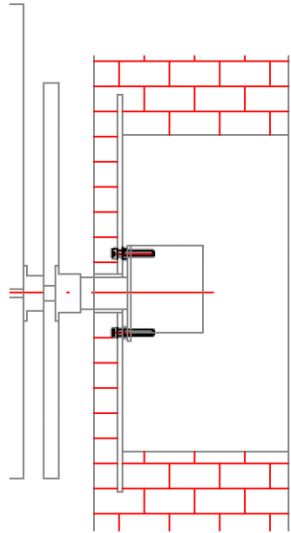


Fig. 1

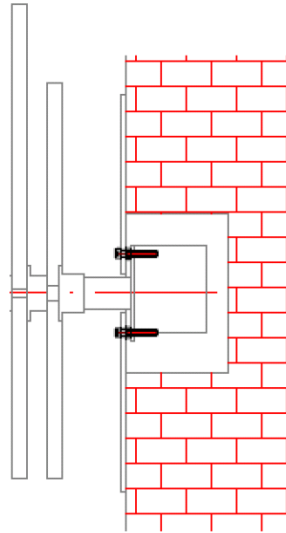


Fig. 2

GFC Series for 1 – 6 Meter Diameter

Three hands: Hour, Minute and Second - Japan Movement Technology



MODEL	Model / Descriptions	USD \$ / pcs
4). Independent movement, time adjusted by pressing buttons on movement		
GFC25NFP	For dial size from 1.3m to 2.5m	Call
GFC25NHP	For dial size from 1.3m to 2.5m, support LED illumination on hands	Call
GFC25LFP	For dial size from 1.3m to 2.5m, with extended long shafts	Call
GFC40NFP	For dial size from 2.6m to 4.0m	Call
GFC40NHP	For dial size from 2.6m to 4.0m, support LED illumination on hands	Call
GFC40LFP	For dial size from 2.6m to 4.0m, with extended long shafts	Call
GFC40LHP	For dial size from 2.6m to 4.0m, with extended long shafts, support LED illumination on hands	Call
GFC60NFP	For dial size from 4.0m to 6.0m	Call
GFC60NHP	For dial size from 4.0m to 6.0m, support LED illumination on hands	Call
GFC60LFP	For dial size from 4.0m to 6.0m, with extended long shafts	Call
GFC60LHP	For dial size from 4.0m to 6.0m, with extended long shafts, support LED illumination on hands	Call

5). Secondary movement, time synchronized with master clock

GFC25NFS	For dial size from 1.3m to 2.5m 1'180.-	Call
GFC25NHS	For dial size from 1.3m to 2.5m, support LED illumination on hands	Call
GFC25LFS	For dial size from 1.3m to 2.5m, with extended long shafts	Call
GFC40NFS	For dial size from 2.6m to 4.0m	Call
GFC40NHS	For dial size from 2.6m to 4.0m, support LED illumination on hands	Call
GFC40LFS	For dial size from 2.6m to 4.0m, with extended long shafts	Call
GFC40LHS	For dial size from 2.6m to 4.0m, with extended long shafts, support LED illumination on hands	Call
GFC60NFS	For dial size from 4.1m to 6.0m	Call
GFC60NHS	For dial size from 4.1m to 6.0m, support LED illumination on hands	Call
GFC60LFS	For dial size from 4.1m to 6.0m, with extended long shafts	Call
GFC60LHS	For dial size from 4.1m to 6.0m, with extended long shafts, support LED illumination on hands	Call

6). Independent movement with adjusting buttons, and can also be synchronized with master clock

GFC25NFB	For dial size from 1.3m to 2.5m 1'190.-	Call
GFC25NHB	For dial size from 1.3m to 2.5m, support LED illumination on hands	Call
GFC25LFB	For dial size from 1.3m to 2.5m, with extended long shafts	Call
GFC40NFB	For dial size from 2.6m to 4.0m	Call
GFC40NHB	For dial size from 2.6m to 4.0m, support LED illumination on hands	Call
GFC40LFB	For dial size from 2.6m to 4.0m, with extended long shafts	Call
GFC40LHB	For dial size from 2.6m to 4.0m, with extended long shafts, support LED illumination on hands	Call
GFC60NFB	For dial size from 4.1m to 6.0m	Call
GFC60NHB	For dial size from 4.1m to 6.0m, support LED illumination on hands	Call
GFC60LFB	For dial size from 4.1m to 6.0m, with extended long shafts	Call
GFC60LHB	For dial size from 4.1m to 6.0m, with extended long shafts, support LED illumination on hands	Call

Teknik Pemasangan dalam Dinding Tembok – GFC Series Tiga Jarum

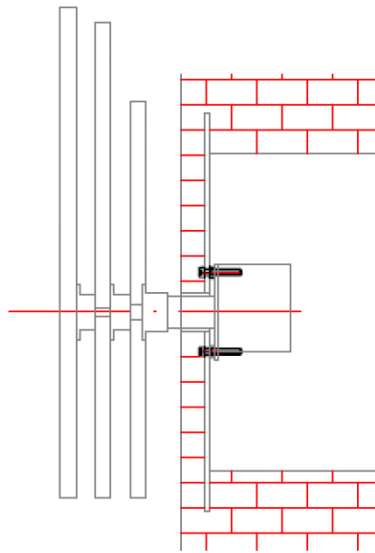


Fig. 1

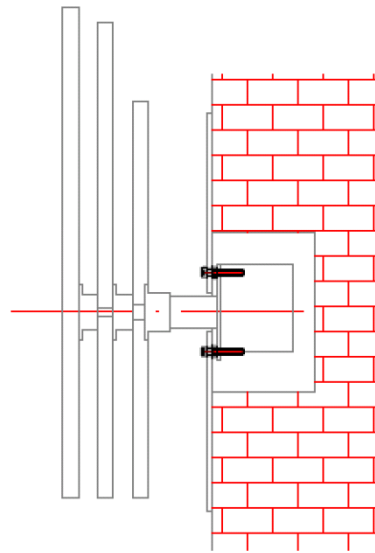




Fig. 2

Master Clock

GFLMC Master clock for wall mounting

MODEL	Model / Descriptions	USD \$ / pcs
	<ul style="list-style-type: none"> - Micro-processor based - Control distance 1200m - 220vac power supply - Internal real time clock - Serial time code output - Up to 99 secondary clocks in one system - Adjusting Hands one by one 	
GFLMC-200	2.3"/1.5" red LED digit display HH:MM SS.	Call
GFLMC-200P	2.3"/1.5" red LED digit display HH:MM SS. Adjust secondary clock hands by pressing buttons	Call
GFLMC-201	2.3"/1.5" red LED digit display HH:MM SS. With daylight	Call
GFLMC-20P	2.3"/1.5" red LED digit display HH:MM SS. Adjust secondary clock hands by pressing buttons. With daylight-saving-time switch	Call

GFCMC Master clock for desktop use

MODEL	Model / Descriptions	USD \$ / pcs
	<ul style="list-style-type: none"> - Micro-processor based - Control distance 1200m - 220vac power supply - Internal real time clock - Serial time code output - Up to 99 secondary clocks in one system - Adjust secondary clock hands remotely - Monitors secondary clocks' running - Programmable summer time setting * - Time zone settable * 	
GFCMC-1200-10	With 1 output channel, controlling and supervising up to 99 secondary clocks	Call
GFCMC-1200-20	With 2 output channels, controlling and supervising up to 198 secondary clocks	Call
GFCMC-1200-1A	With 1 output channel, controlling and supervising up to 99 secondary clocks. With built-in programmable illumination switch (220v 10A).	Call
GFCMC-1200-2A	With 2 output channels, controlling and supervising up to 198 secondary clocks. With built-in programmable illumination switch (220v 10A).	Call
GFCMC-1200-1B	With 1 output channel, controlling and supervising up to 99 secondary clocks. With built-in programmable MP3 hour-striking music player.	Call
GFCMC-1200-2B	With 1 output channel, controlling and supervising up to 198 secondary clocks. With built-in programmable MP3 hour-striking music player.	Call
GFCMC-1200-1C	With 1 output channel, controlling and supervising up to 99 secondary clocks. With built-in programmable illumination switch (220v 10A). With built-in programmable MP3 hour-striking music player.	Call
GFCMC-1200-2C	With 2 output channel, controlling and supervising up to 198 secondary clocks. With built-in programmable illumination switch (220v 10A). With built-in programmable MP3 hour-striking music player.	Call

GFClock Yasa Persada

Showroom : Parkir Masjid Jami Al-Fajri
Jl. Masjid Alfajri No.17 Pejaten Barat - Pasar Minggu - Jakarta Selatan
12510

Telp. +62-21-41518840 ; 70978302

Office : Graha Mobisel 1st Floor
Jl. Mampang Prapatan Raya No.139 - Jakarta Selatan 12740

Telp. +62-21-7975555 Ext.6049

Workshop : Jl. Masjid Alfajri No.11/44 Pejaten Barat – Pasar Minggu
Jakarta Selatan 12510

Telp. +62-828-7790027

Phone : +62-21-79170265 E-mail : anggono@gfclock.com
+62-21-98529616 MSN : baszukv@hotmail.com

Fax : +62-21-79170265 YM : baszukv@yahoo.com

Website : Contact : MR.ANGGONO BASUKI
HP. : 0818-802045

<http://www.gfclock.com> Blackberry: **2880ECDC**
29B48D7C